



DALMINE (BG)
viale Brembo


B1 | Piano Terra


QUADRILocale
con GIARDINO


 110.90 mq

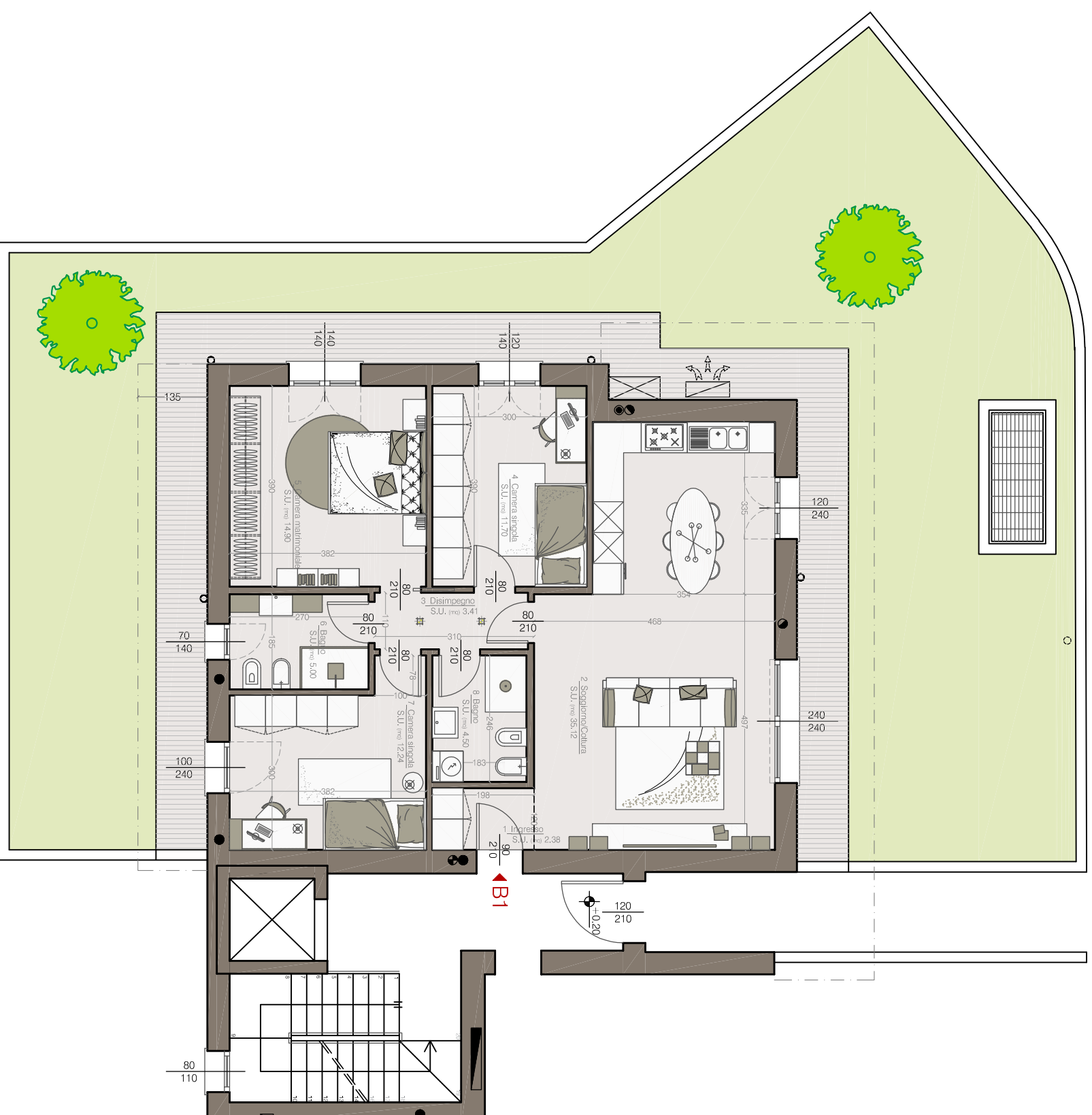
 Box Doppio

 3 camere

 2 bagni

 166.63 mq

 Classe Energetica A4



N.B.: Rappresentazione grafica puramente indicativa, non vincolante ai fini contrattuali e al capitolato, soggetta a possibili modifiche da parte promittente venditrice per esigenze strutturali o di regolamento edificio.